

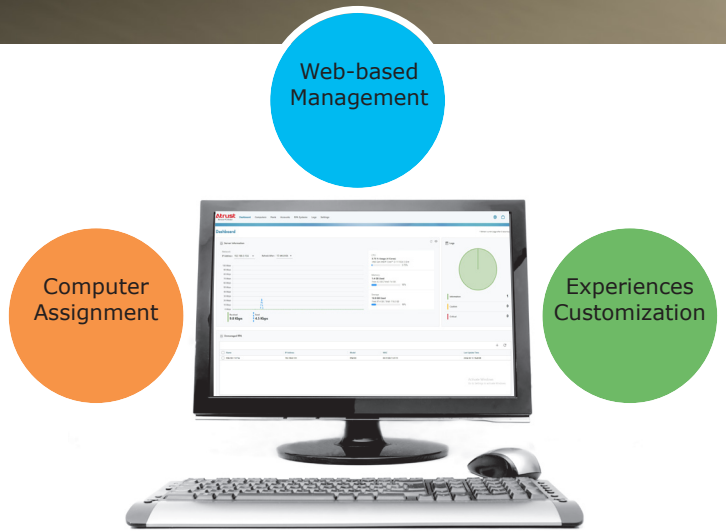


Remote PC Broker

A Smart Way to Manage Both Cartridge-based Computers and User Connections

— Just through a Web browser

Desktop Provisioning based on a different strategy from virtualization, RPA (Remote PC Array) systems take a physical and cartridge-based approach. A cartridge, as an internal and hot-pluggable component of an RPA system, has its own CPU, memory, and storage just like a PC. IT administrators are enabled to manage cartridges with the management console developed by Atrust, and users are allowed to access the installed desktop through a remote connection.



Remote PC Broker, designed for a smart way to manage both cartridge-based computers and user connections, could help manage and assign computers inside RPA systems to target users. Additionally, IT administrators could further customize user access, permissions, and desktop experiences. With Web Interface of Remote PC Broker, all management tasks could be performed over a graphic user interface simply through a Web browser.

The key features of **Remote PC Broker** are:

- [Discovering and Adding RPA Systems](#)
- [Managing Computers inside RPA Systems](#)
- [Assigning Computers to Users](#)
- [Configuring User Access, Permissions, and Desktop Experiences](#)
- [Supporting Floating and Dedicated Computer Assignment with Pools](#)

TECHNICAL SPECIFICATIONS

Remote PC Broker

Minimum System Requirements

CPU	4 Cores at least (2.00 GHz or higher recommended)
Memory	16 GB at least
Storage	64 GB of free hard drive space at least

Supported Operating Systems

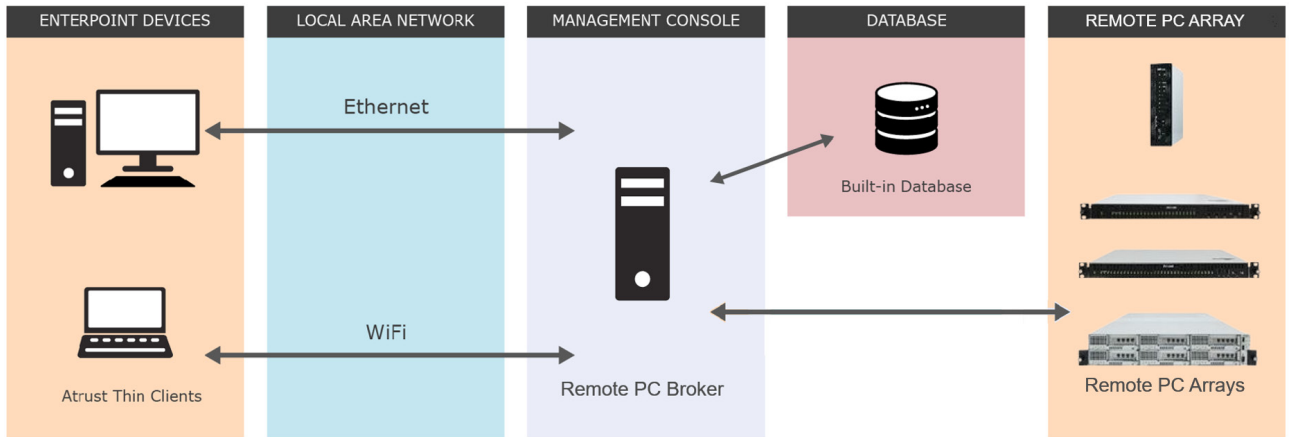
- Ubuntu 22.04 LTS Desktop and Server
- Ubuntu 24.04 LTS Desktop and Server

Web Interface of Remote PC Broker

Supported Web Browsers

- Google chrome
- Mozilla Firefox
- Microsoft Edge
- Apple Safari

SYSTEM DIAGRAM



INTERFACE OVERVIEW

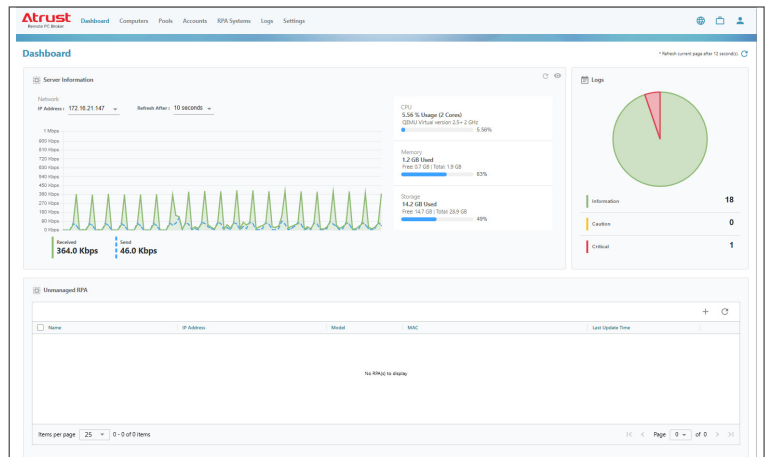
The screenshot shows the Atrust Remote PC Broker interface. At the top, there is a navigation bar with tabs: Dashboard (1), Computers (2), Pools (3), Accounts (4), RPA Systems (5), Logs (6), and Settings (7). On the right side, there is a user profile icon (8). The main content area is titled 'Dashboard' and includes a 'Refresh current page after 5 seconds' button. The dashboard is divided into several sections: 'Server Information' (9) showing network status (IP: 192.168.0.104, Received: 9.8 Kbps, Send: 4.5 Kbps), CPU usage (3.75%), Memory usage (1.4 GB Used, 18%), and Storage usage (18.9 GB Used, 16%). A 'Logs' section shows a pie chart and a summary of log levels: Information (1), Caution (0), and Critical (0). Below this is the 'Unmanaged RPA' section, which contains a table with columns for Name, IP Address, Model, MAC, and Last Update Time. One entry is visible: RPA100-11CF14 with IP 192.168.0.135, Model RPA100, MAC 001F0811CF15, and Last Update Time 2024-08-13 16:45:06. An 'Activate Windows' watermark is present at the bottom right of the dashboard area.

No.	Name	Description
1	Dashboard tab	Click to get an overview of Remote PC Broker.
2	Computers tab	Click to manage and assign RPA cartridge-based computers.
3	Pools tab	Click to manage and assign RPA cartridge-based computers with pools.
4	Accounts tab	Click to manage accounts and access to RPA cartridge-based computers.
5	RPA Systems tab	Click to discover, add, and manage RPA systems.
6	Logs tab	Click to view event logs.
7	Settings tab	Click to configure settings for Web Interface of Remote PC Broker.
	Language	Click to switch to the preferred UI language.
8	Jobs	Click to view running tasks of Remote PC Broker.
	User	Click to view the login user or to log out.
9	Management area	Views information, manages objects, or configures settings when a tab is selected.

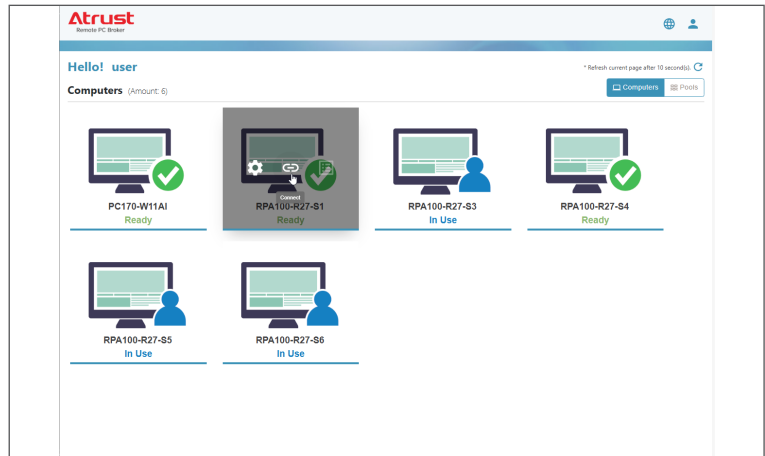
FEATURES AT A GLANCE

Web UI for Different Roles

As an administrator, you can log in to manage and dispatch.

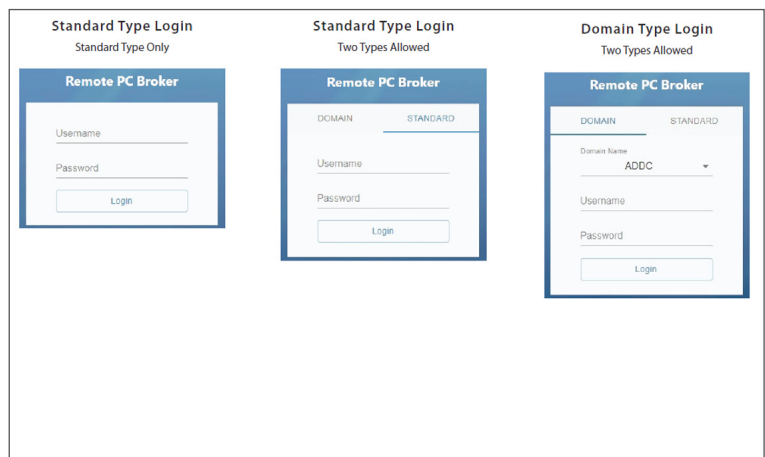


As a user, you can log in to view and connect.



Support for Multiple Account Login Types

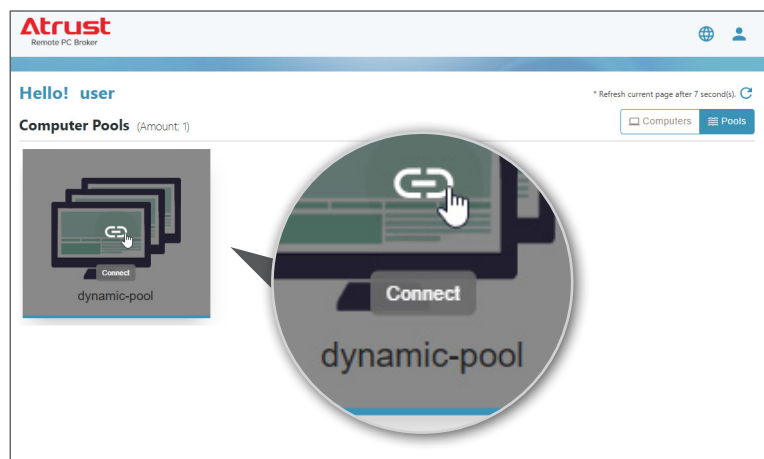
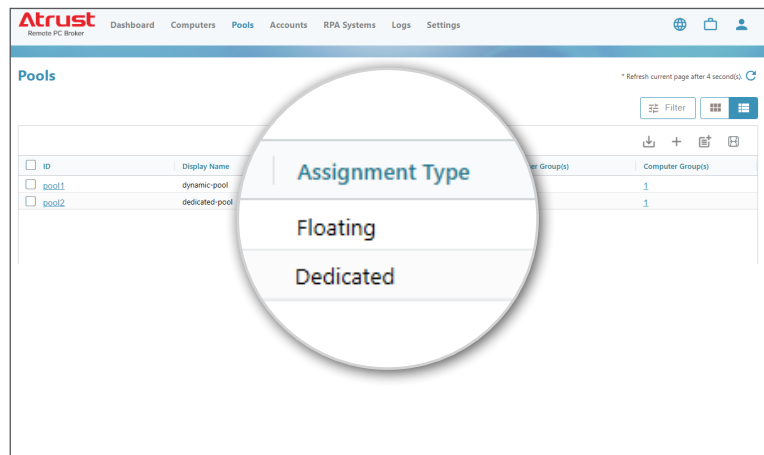
Different login types are supported and configurable according to your enterprise configuration.



Two Types of Desktop Assignment / Two Types of Pools

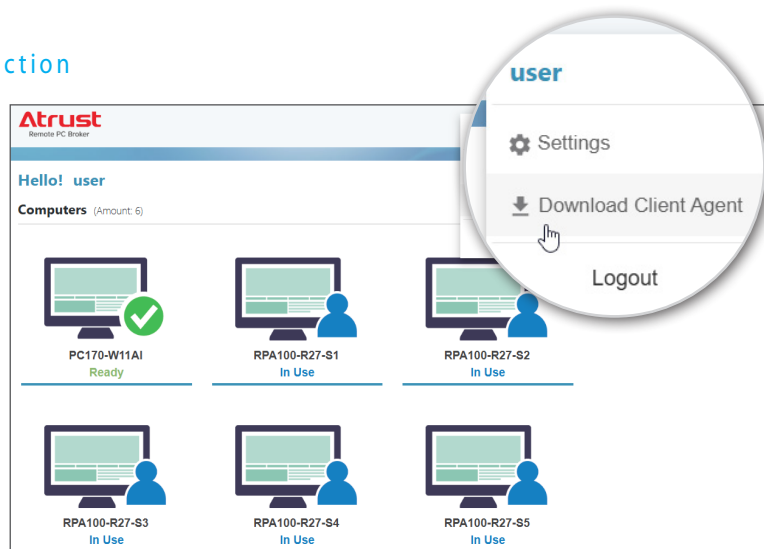
Both Floating (Dynamic) and Dedicated (Static) types of Desktop Assignment are supported. IT administrator can set up an appropriate type for users.

For example, employees may use dedicated type desktops and guests may use Floating type instead.



Client Agent Available for Quick Connection

Using our Client Agent, users can open the remote desktop program and launch a desktop quickly just with a single-click.



Maintenance at a Fingertip

At **Settings** tab, administrators can:

- Collect error report
- Clear logs
- Set security policy
- Back up and restore management database
- Remote update
- Import certificate
- Use a custom logo
(your company logo, for example)

Atrust Remote PC Broker

Dashboard Computers Pools Accounts RPA Systems Logs **Settings**

Settings

- General
- Active Directory / LDAP
- About
- Product
- Contact Info
- EULA

Clear Logs

Clear all system logs:

Error Report

Data for Troubleshooting:

Security Policy

Password must meet complexity requirements:

Remote Update

Service Update:

No file chosen

Backup

Backup Management Database:

Restore

Restore Management Database:

No file chosen

Certificate

Current Certificate:

Description	Issued to	Issued by	Expired on	Delete
Default	Atrust Computer Corporation	Atrust Computer Corporation	2049-12-31	

Import Certificate:

* The supported file format is Privacy-Enhanced Mail (PEM).
* Please select a PEM file that includes both the certificate and the private key.

No file chosen

Logo

Enable Customized Logo

* The recommended size for uploading images is 124 x 40 pixels.
* The image upload size limit is 1 MB.
* Accepted image upload formats are JPG, JPEG, and PNG.

Atrust
Remote PC Broker

One Web UI to Manage All

On one Web UI, administrators can discover and add multiple RPA systems, manage desktops and user connections. Management made easy!

The screenshot displays the Atrust Remote PC Broker web interface. The top navigation bar includes 'Dashboard', 'Computers', 'Pools', 'Accounts', 'RPA Systems', 'Logs', and 'Settings'. The main content area is titled 'Computers' and shows a list of 25 computers. Three computers are selected, and a context menu is open over them, showing options like 'Maintain Off', 'Identify On', 'Identify Off', 'Assign User(s)', 'Permissions', and 'Delete'. The table below shows the details of the computers, including their names, IP addresses, RPA systems, slots, device statuses, and remote session statuses.

Name	IP Address	RPA	Slot	Device status	Remote Session S	Rem
<input type="checkbox"/> pvehci1	172.16.21.60, 10.0.0.60	RPA120-R9-F...	#1	Power On	Not Ready	Off
<input type="checkbox"/> pvehci2	172.16.21.61, 10.0.0.61	RPA120-R9-F...	#2	Power On	Not Ready	Off
<input type="checkbox"/> pvehci3	172.16.21.62, 10.0.0.62	RPA120-R9-F...	#3	Power On	Not Ready	Off
<input type="checkbox"/> rpaadmin-PC170	172.16.21.32, 192.168.0.100	RPA120-R9-F...	#6	Power On	Not Ready	Off
<input type="checkbox"/> PC170-W11AI	172.16.21.52	RPA120-R9-F...	#10	Power On	Ready	On
<input type="checkbox"/> RPA100-R27-S1	172.16.14.132, 100.27.2.1	RPA100-R27	#1	Power On	In Use	On
<input type="checkbox"/> RPA100-R27-S2	172.16.14.213, 100.27.2.2	RPA100-R27	#2	Power On	In Use	On
<input type="checkbox"/> RPA100-R27-S3	172.16.14.127, 100.27.2.3	RPA100-R27	#3	Power On	In Use	On
<input checked="" type="checkbox"/> RPA100-R27-S4	172.16.14.216, 100.27.2.4	RPA100-R27	#4	Power On	In Use	On
<input checked="" type="checkbox"/> RPA100-R27-S5	172.16.14.159, 100.27.2.5	RPA100-R27	#5	Power On	In Use	On
<input checked="" type="checkbox"/> RPA100-R27-S6	172.16.14.217, 100.27.2.6	RPA100-R27	#6	Power On	In Use	On
<input type="checkbox"/> RPA100-R27-S7	172.16.14.219, 100.27.2.7	RPA100-R27	#7	Power On	In Use	On
<input type="checkbox"/> RPA100-R27-S8	172.16.14.221, 100.27.2.8	RPA100-R27	#8	Power On	In Use	On
<input type="checkbox"/> RPA100-R27-S9	172.16.14.239, 100.27.2.9	RPA100-R27	#9	Power On	In Use	On
<input type="checkbox"/> RPA100-R27-S10	172.16.14.212, 100.27.2.10	RPA100-R27	#10	Power On	In Use	On

Website

www.atrustcorp.com

Email

sales@atrustcorp.com

Taiwan (HQ)

Tel: +886 3 3288837 | Fax: +886 3 3288973

3F, No. 361, Fusing 1st Rd., Gueishan District, Taoyuan City 333, Taiwan

