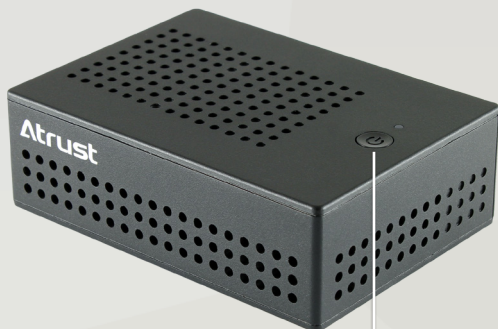




Thin Client

Atrust t35C Citrix Workspace Hub (Raspberry Pi[®] 4)



1



2

3

4

5

6

7

8

1 Power Button

2 DC IN

3 Micro HDMI Port x 2

4 Audio Out

5 Kensington Lock Slot

6 USB 2.0 Port x 2

7 USB 3.0 Port x 2

8 LAN Port

With the Citrix Ready workspace hub, Atrust introduces a new thin client t35C (powered by Raspberry Pi 4). The Atrust t35C Citrix workspace hub is designed for organization looking for cost-effective and high-performance solutions for their virtual workspace needs.

With integrated WiFi and Bluetooth, Atrust t35C supports session roaming, QR code login, and screen casting. The Atrust t35C bundled with Atrust Client Setup (ACS) and central management tool Atrust Device Manager (ADM) software, management becomes simple and easy. The Atrust t35C workspace hub is complete with Skype for Business, and 2 high definition displays.

Atrust t35C Features

- ▶ Dual Micro HDMI Display Ports
- ▶ Optimized for HDX
- ▶ Skype for Business Optimization
- ▶ Citrix Ready Endpoint Certified
- ▶ Integrated with Atrust Device Manager software
- ▶ Broadcom BCM2711 Quad Core 1.5GHz 64-bit CPU
- ▶ Support for WiFi
- ▶ Low Power Consumption

Atrust t35C

System	t35C
Processor	Broadcom BCM2711 Quad Core 1.5GHz 64-bit CPU
Memory	
System memory	2GB (Manufacturing option : 4GB)
Flash memory	16GB
Graphics	
Maximum resolution	3840 x 2160 Dual Display @ 30 Hz 3840 x 2160 Single Display @ 60 Hz 2560 x 1600 @ 60 Hz 2560 x 1440 @ 60 Hz 1920 x 1080 @ 60 Hz (Atrust recommendation)
I/O Interfaces	
I/O ports	Side: 2 x USB 3.0, 2 x USB 2.0 (Maximum total USB peripheral current draw is 1.2A), 1 x RJ-45 Rear: 2 x Micro HDMI, 1 x Audio Out, 1 x DC IN
Networking	
Ethernet	Gigabit ethernet
WiFi	802.11b/g/n/ac wireless LAN
Bluetooth	Bluetooth 5.0 BLE
Dimensions / Weight	
Dimensions	(W) 105.3 x (D) 76 x (H) 34 mm
Weight	134g (approximate)
Environment	
Cooling	Fan (t35C has an automatic fan control that engages when CPU temperature reaches or exceeds 80°C)
Operating temperature	0°C ~ 35°C
Non-operating temperature	-20°C ~ 60°C
Operating humidity (Rh)	20% ~ 80% (non-condensing)
Non-operating humidity (Rh)	5% ~ 95% (non-condensing)
AC Adaptor	
Operating voltage range	100 ~ 240 VAC
Rated line frequency	50 ~ 60 Hz
Rated output current (max)	3A
Output voltage	5V
Software	
Operating system	Atrust OS
Management	Atrust Device Manager (ADM) / Atrust Client Setup (ACS)
Protocol	Citrix® ICA/HDX™

©2020 Atrust Computer Corp. The information contained herein is subject to change without notice. Atrust shall not be liable for technical or editorial errors or omissions contained herein. Citrix and ICA/HDX are trademarks of Citrix Systems, Inc.. To learn more, visit www.atrustcorp.com.

Atrust

Atrust Computer Corp.

3F., 361, Fusing 1st Rd., Gueishan Dist., Taoyuan City 333, Taiwan
T.+886-3-3288837 F.+886-3-3288973
sales@atrustcorp.com www.atrustcorp.com