

Atrust

Energy Saving Innovation
ESG Product



Remote PC Array RPA100

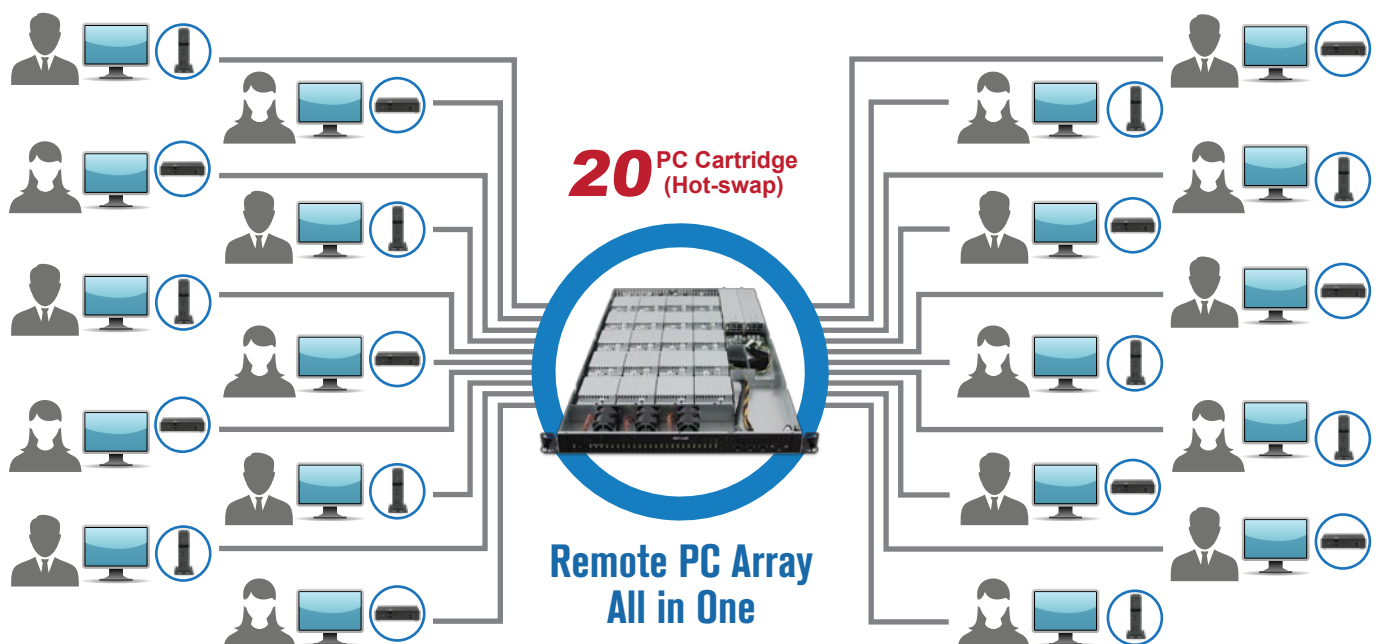
80%
Material
Saving

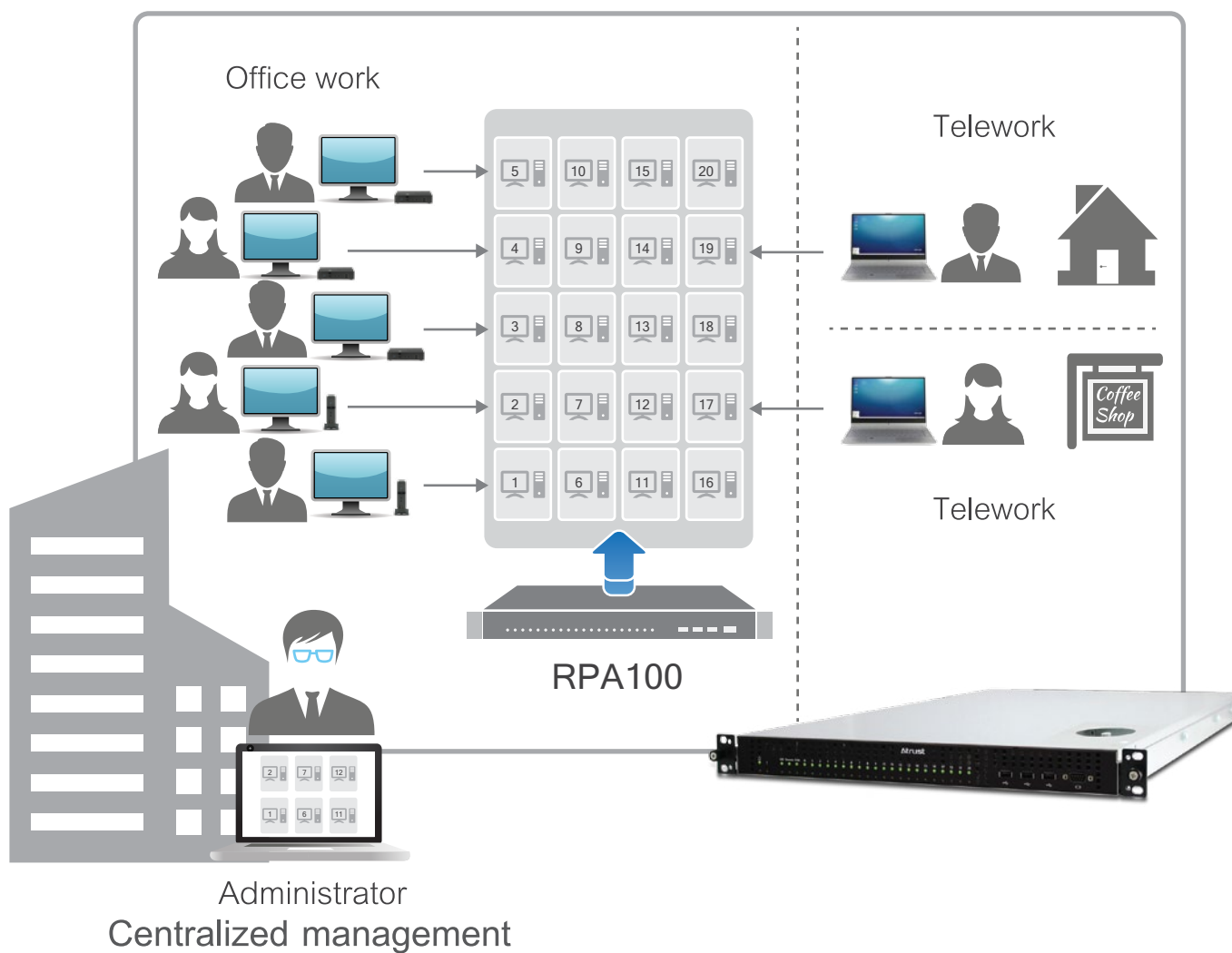
75%
Energy
Saving



In the Remote PC Array (RPA), 20 physical PC cartridges are mounted in a 1U housing. It provides all of the necessary CPU, memory, storage (SSD), network switch and management software to get the work done.

Designed on a physical PC for remote connection, no hypervisor is required. This will dramatically shorten the cost of the infrastructure part as well as the design and construction period. It significantly reduces the cost of the entire virtual desktop system and solves many challenges traditional virtual desktops face.





ACM - Atrust Chassis Manager



ACM can manage multiple RPA simultaneously and support GUI or CLI (SSH) for administration.

Switch and Chassis Management

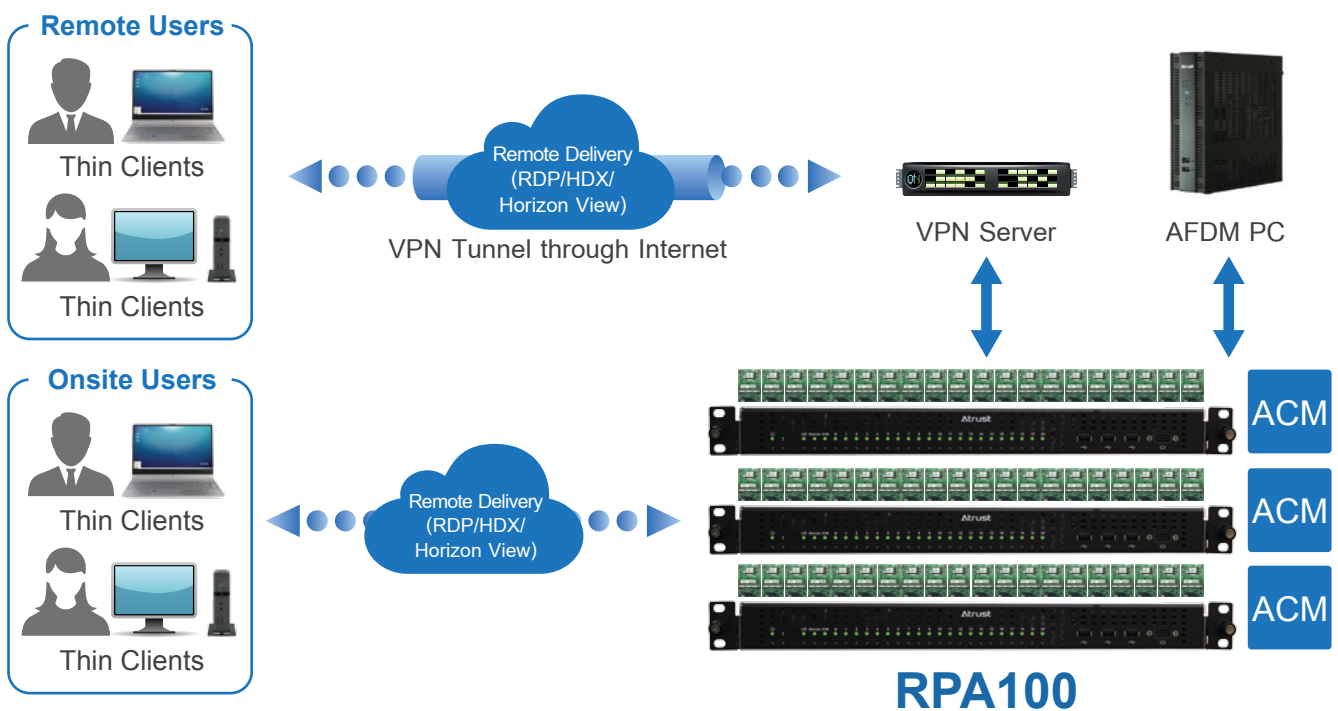
- CPU, PSU and FAN Status
- Temperature monitoring
- Chassis Failure Email Notification
- Firmware Upgrade and Version
- User Account Management
- ACM Management (IP Setting)
- Switch Setting
- SNMP Trap

PC Cartridges Management

- Power On/Off
- Shut Down/ Reboot OS
- Join Domain
- Change Hostname
- Change IP/Gateway Settings



Remote PC Array Topology



On-premise VDI deployment barrier

- 1 Initial Installation Cost
- 2 Design and Deployment Time
- 3 Unexpected Performance Issues
- 4 Unexpected Increased Maintenance and Operation Cost
- 5 System Expansion
- 6 Microsoft VDA License Cost



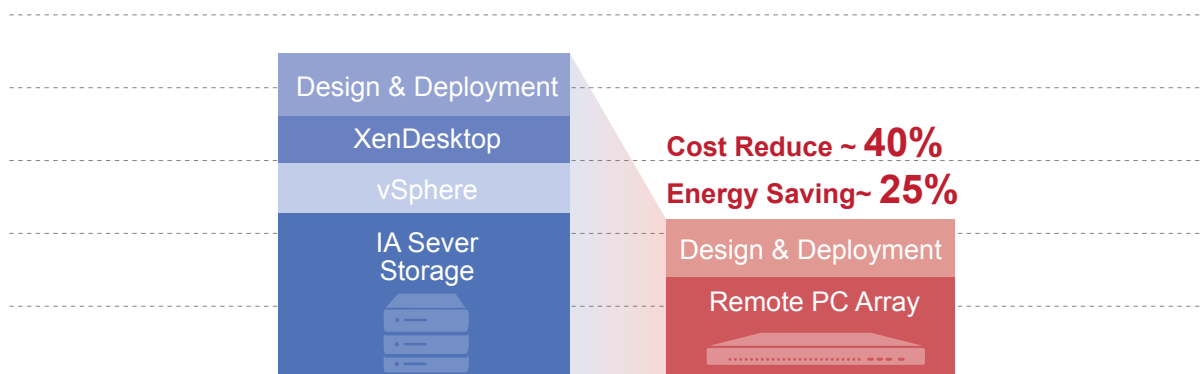
Atrust



Atrust Remote PC Array Can Help

Initial Cost

Standard Cost comparison between VDI and RPA (Example: 300 users in Japan)



Prerequisites:

VDI: Use vSphere as Hypervisor
Use Citrix XenDesktop as VDI Solution

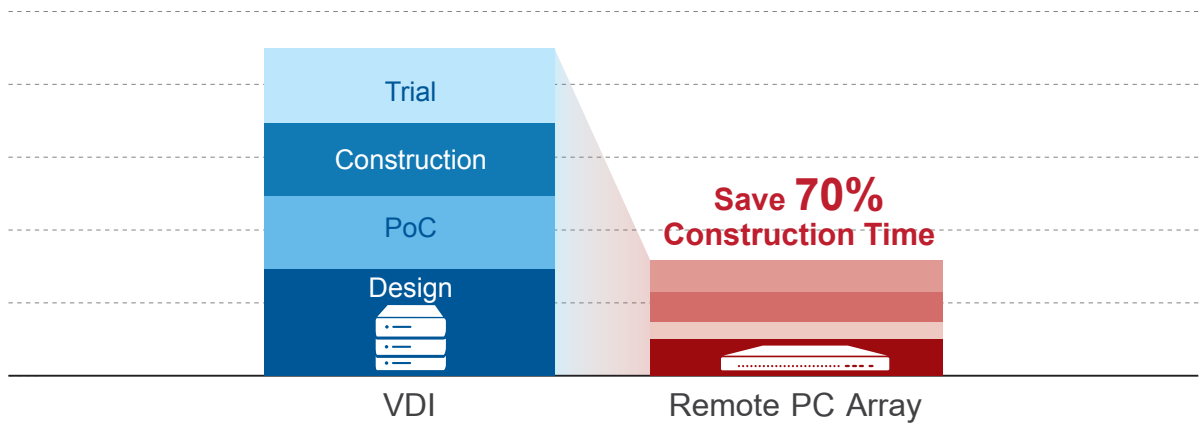
Microsoft Windows 10 Pro license and VDA license are not included in the above cost

RPA: Use N2807, 4G RAM and 64GB SSD

*Maintenance cost not included for both VDI and RPA

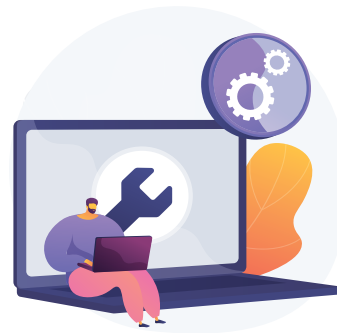
Shorten Design and Construction Time

No need for hypervisor and performance sizing, shortening by about 70% compared to general VDI design and construction period.



Comparison of construction period of general VDI and Remote PC Array

Unexpected Performance Issues



Potential VDI
Performance Issues

- Big loading at a specific short time
- Bugs in virtualization software such as Hypervisor

Remote PC Array
eliminates the possible
VDI performance issues

- Fixing user resources
- Not interfered with other users
- No virtualization software needed
- Shorten the issue resolving time

**Atrust Remote PC Array
Can Help**

Maintenance and Operation Cost

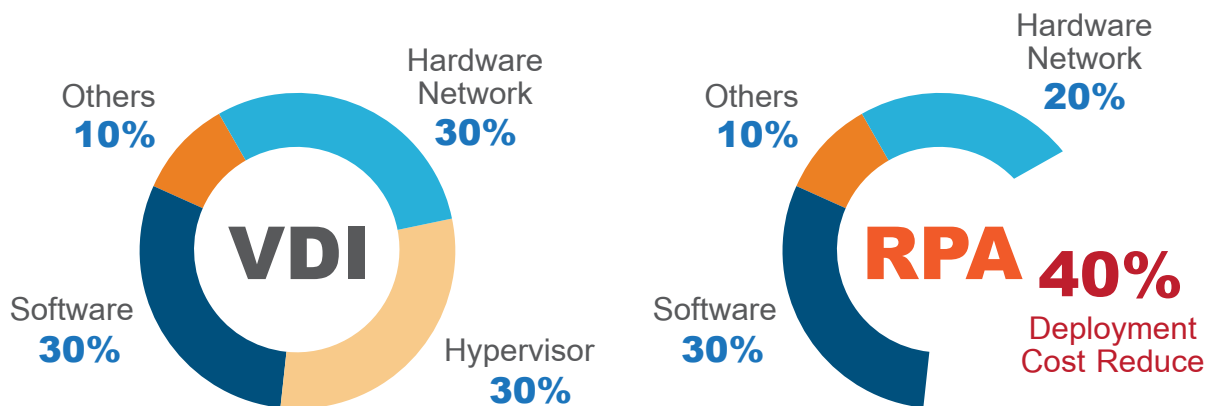
Remote PC Array is Easy for Maintenance

Troubleshooting :

Step 1 Power on and off, checks PC cartridge status remotely

Step 2 PC cartridges can be easily removed through Thumb Screw without powering off the Chassis

Comparison of Maintenance and Operation Cost of VDI and Remote PC Array



System Expansion

Expansion Work in VDI is Complicated

- Not easy to plan resources needed in advance for the future expansion
- Expansion design and deployment are complicated

Expansion Work in Remote PC Array is Simple and Cost Saving

- Just increase the number of PC cartridge according to the number of new users
- Minimize the downtime

Atrust Remote PC Array Can Help



Remote PC Array - RPA100



Rear



Chassis	
Dimensions	1U (W) 430 x (H) 43.8 x (D) 736.6 mm
Weight	16.7 kg (Approximate) (Including 20 Cartridges Fully Loaded, 2 Power Supplies Installed)
Built-in Component	20 x Cartridge, 1 x KVM Switch, 1 x Ethernet Switch, 1 x Local Management Console
Power	2 x 550W Hot-Swap
Operating Humidity (Rh)	10% ~ 90% (Non-Condensing)
Operating Temperature	0°C ~ 35°C
I/O Ports	Front : 1 x VGA, 3 x USB 2.0 Rear : 4 x 1GbE (RJ-45), 1 x (RJ-45) Management Port
Cardridge	
Supported OS	Microsoft Windows® 10 Pro Microsoft Windows® 11 Pro
Processor	Intel® Core i3-1115G4 Dual Core 3.0GHz (Max Turbo 4.10 GHz)
Memory	8GB/16GB
Storage	128GB/256GB
Network	Dual GbE NIC Per PC Cartridge
Ethernet Switch	
Port	1 GbE 44 Port (Internal 40 Ports, External 4 Ports)
VLAN	Tag / Untag
LAG	Static, Dynamic (LACP)
Spanning-Tree	STP, RSTP, MSTP
Management	GUI, CLI

© 2025 Atrust Computer Corp. The information contained herein is subject to change without notice. Atrust shall not be liable for technical or editorial errors or omissions contained herein.
Microsoft and Windows are trademarks of the Microsoft group of companies. Citrix and ICA/HDX are trademarks of Citrix Systems, Inc.. VMware and Horizon View are trademarks of VMware, Inc.. To learn more, visit www.atrustcorp.com.

Atrust

Atrust Computer Corp.
3F., 361, Fusing 1st Rd., Gueishan Dist., Taoyuan City 333, Taiwan
T.+886-3-3288837 F.+886-3-3288973
sales@atrustedcorp.com www.atrustedcorp.com

2025 V.01