

# Atrust P2T USB

From PCs to Thin Clients

**Atrust**

Version 2.05

© 2017-18 Atrust Computer Corp.



## Copyright and Trademark Statements

© 2017-18 Atrust Computer Corp. All rights reserved.

This document contains proprietary information that is protected by copyright. No part of this document may be photocopied, reproduced, or translated to another language without the prior written consent of Atrust Computer Corp.

### Disclaimer

Atrust Computer Corp. ("Atrust") makes no representations or warranties with respect to the contents or use of this document, and specifically disclaims any express or implied warranties of merchantability or fitness for any particular purpose. Atrust is not liable for technical or editorial errors or omissions contained herein. The information in this document is subject to change without notice.

### Trademark Statements

Atrust is a trademark of Atrust Computer Corp.

Microsoft, Windows, Windows Server, RemoteFX, and MultiPoint are trademarks or registered trademarks of the Microsoft group of companies.

Citrix, ICA, XenApp, XenDesktop, and VDI-in-a-Box are trademarks of Citrix Systems, Inc. and/or one or more of its subsidiaries, and may be registered in the United States Patent and Trademark Office and in other countries.

VMware, VMware View, and VMware Horizon View are trademarks or registered trademarks of the VMware, Inc.

PCoIP is a registered trademark of Teradici Corporation in the United States and/or other countries.

The Parallels and 2X are registered trademarks of Parallels International GmbH.

Other product names mentioned herein are used for identification purposes only and may be trademarks and/or registered trademarks of their respective companies.

## About This User's Manual

This manual provides instructions on how to make use of an existing computer and Atrust P2T USB to provide Atrust Linux-based thin client experience.

### Manual Structure and Subjects

Chapter	Subject
1	Provides instructions on the use of Atrust P2T USB.
Appendices	Provide instructions on booting, information on supportability, setup notes, and known issues for tested devices.

### Notes, Tips, and Warnings

Throughout this manual, the notes, tips, and warnings in the following formats are used to provide important information, useful advice, and prevent injuries to you, damage to your devices, or loss of data on your system.



#### NOTE

- A note provides important information for a specific situation.



#### TIP

- A tip gives a piece of useful advice to perform a task more efficiently.



#### WARNING

- A warning provides crucial information that must be followed to prevent injuries to you, damage to your devices, or loss of data on your system.

## Safety and Regulatory Information

### Regulatory Statement

#### Federal Communications Commission Interference Statement

This equipment has been tested and found to comply with the limits for a Class B digital device, pursuant to Part 15 of the FCC Rules. These limits are designed to provide reasonable protection against harmful interference in a residential installation. This equipment generates, uses and can radiate radio frequency energy and, if not installed and used in accordance with the instructions, may cause harmful interference to radio communications. However, there is no guarantee that interference will not occur in a particular installation. If this equipment does cause harmful interference to radio or television reception, which can be determined by turning the equipment off and on, the user is encouraged to try to correct the interference by one of the following measures:

- Reorient or relocate the receiving antenna.
- Increase the separation between the equipment and receiver.
- Connect the equipment into an outlet on a circuit different from that to which the receiver is connected.
- Consult the dealer or an experienced radio/TV technician for help.

**FCC Caution:** Any changes or modifications not expressly approved by the party responsible for compliance could void the user's authority to operate this equipment. This device complies with Part 15 of the FCC Rules. Operation is subject to the following two conditions: (1) This device may not cause harmful interference, and (2) this device must accept any interference received, including interference that may cause undesired operation.

#### IMPORTANT NOTE:

#### FCC Radiation Exposure Statement

This equipment complies with FCC radiation exposure limits set forth for an uncontrolled environment. This equipment should be installed and operated with minimum distance 20 cm between the radiator & your body.

This transmitter must not be co-located or operating in conjunction with any other antenna or transmitter.

#### WEEE (Waste Electrical and Electronic Equipment) Directive



In the European Union, this symbol indicates that this product should not be disposed of with household waste. It should be deposited at an appropriate facility to enable recovery and recycling. For proper disposal, please contact your local recycling or hazardous waste center.

#### RoHS 2 (Restriction of the use of Hazardous Substances) Directive

This product of Atrust Computer Corp. fulfils the requirements of the EU directive 2011/65/EU on the Restriction of the use of certain Hazardous Substances in electrical and electronic equipment (RoHS 2). The CE marking is applied on the product accordingly.

#### REACH (Registration, Evaluation, Authorisation and restriction of Chemicals) Regulation

REACH (EC 1907/2006) aims to improve the protection of human health and the environment through the better and earlier identification of the intrinsic properties of chemical substances. This is done by the four processes of REACH, namely the registration, evaluation, authorisation and restriction of chemicals. REACH also aims to enhance innovation and competitiveness of the EU chemicals industry. Atrust Computer Corp. and our suppliers have taken the necessary action to meet the requirements of REACH.



# Table of Contents

<b>Copyright and Trademark Statements</b>	<b>i</b>
Disclaimer	i
Trademark Statements	i
<b>About This User's Manual</b>	<b>ii</b>
Manual Structure and Subjects	ii
Notes, Tips, and Warnings	ii
<b>Safety and Regulatory Information</b>	<b>iii</b>
Regulatory Statement	iii
<b>1 Using Atrust P2T USB</b>	<b>1</b>
<b>1.1 Introduction</b>	<b>3</b>
<b>1.2 Features</b>	<b>3</b>
<b>1.3 Technical Specifications</b>	<b>3</b>
<b>1.4 Getting Started</b>	<b>4</b>
<b>Appendices</b>	<b>7</b>
<b>A.1 Booting from Your P2T USB</b>	<b>9</b>
<b>A.2 Supportability, Setup Notes, and Known Issues</b>	<b>10</b>



# 1

---

## Using Atrust P2T USB

This chapter provides instructions on the use of Atrust P2T USB.

<b>1.1 Introduction</b>	
Desktop virtualization and simplified endpoint device	3
<b>1.2 Features</b>	
The key features of Atrust P2T USB	3
<b>1.3 Technical Specifications</b>	
System requirements	3
<b>1.4 Getting Started</b>	
The use of Atrust P2T USB	4



## 1.1 Introduction

Desktop virtualization provides a new perspective to reconsider the design and implementation of an IT infrastructure. In a desktop virtualization infrastructure, a station is no longer a cumbersome desktop, but simply an endpoint device for users to access delivery services from the server(s).

With the introduction of the desktop virtualization technologies, you can considerably benefit from:

- Centralized management of work environments
- Drastically reduced endpoint software/hardware issues
- Application/Desktop access across different platforms
- Simplified system maintenance
- Improved system security
- More scalability with low-cost endpoint devices

## 1.2 Features

The key features of Atrust P2T USB are:

- Quick access to Atrust P2T thin client by leveraging an existing computer
- Quick switch between P2T thin client and original computer OS
- Broad support for industry-leading desktop virtualization solutions by Microsoft, Citrix, VMware, etc
- Highly configurable and customizable client settings (with Atrust Client Setup)
- Fully support for remote management, update, and assistance (with Atrust Device Manager)

## 1.3 Technical Specifications

<b>Minimum Hardware Requirements</b>	
CPU	x86 compatible
Memory	2 GB <sup>1</sup>
BIOS	USB boot support <sup>2</sup>

<sup>1</sup> In addition, a built-in Firefox will be available if 2 GB or more memory is equipped.

<sup>2</sup> You need to boot from P2T USB.

## 1.4 Getting Started

To use your P2T USB, please do the following:

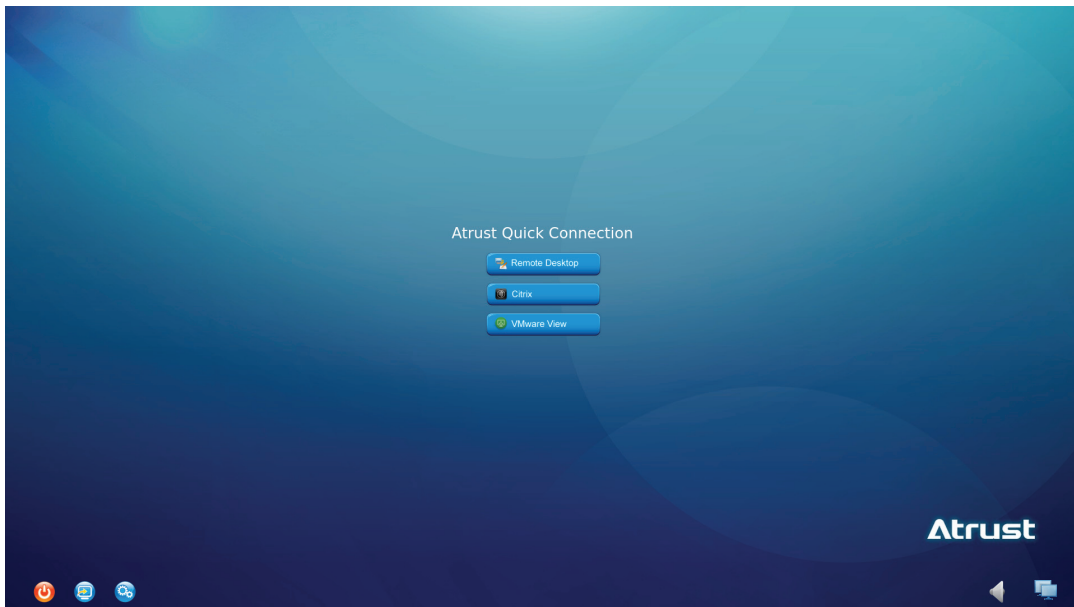
1. Ensure that your computer can boot from a USB key.
2. Start or restart the computer, and then boot from your P2T USB.




### NOTE

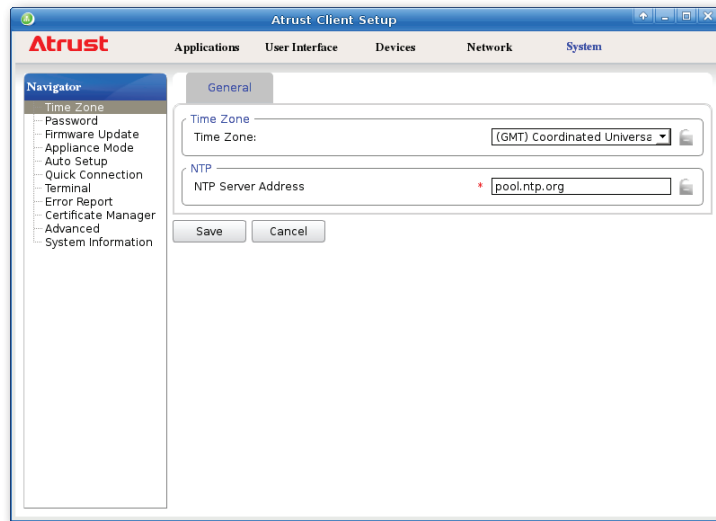
- If you have trouble booting from P2T USB, please see "A.1 Booting from Your P2T USB" on page 9.

3. Your P2T thin client will enter Quick Connection screen.



4. Click the **Setup**  icon to launch Atrust Client Setup.

5. On Atrust Client Setup, click **System** > **Time Zone**.



6. Click the Time Zone drop-down menu to select the desired time zone.
7. Click **Save** to apply, and then close Atrust Client Setup. Your P2T thin client is ready for use.

**NOTE**

- For information on how to use your P2T thin clients, please refer to the Quick Guide for P2T Thin Client and User's Manual for P2T Thin Client.

**WARNING**

- **Don't remove** your P2T USB while using it. Always remove your P2T USB after shutting down your P2T thin client.





# Appendices

This chapter provides instructions on booting, information on supportability, setup notes, and known issues for tested devices.

## **A.1 Booting from Your P2T USB**

How to boot from your P2T USB

## **A.2 Supportability, Setup Notes, and Known Issues**

Tested Devices and Supportability

Setup Notes for Tested Devices

Known Issues for Tested Devices



## A.1 Booting from Your P2T USB

To boot from your P2T USB, try one of the following:

1. Attach your P2T USB, press the **access key** to enter Boot menu, and then boot from it.
2. In BIOS, set to boot from a USB key **first**, attach your P2T USB, and then boot from it.



### NOTE

- **Access Key for Boot Menu / BIOS.** The **access key** varies with different computers. For some computers, the information appears on the screen at the very beginning when starting up. You could also try documents for users or administrators to see if this information is available.



### TIP

- Here are some common **access keys for Boot menu**:
  - » Acer: **F12**
  - » ASUS desktop / laptop: **F8 / Esc**
  - » Dell: **F12**
  - » HP: **F9**
  - » IGEL: **Esc > Boot Manager**
  - » Intel Compute Stick: **F10**
  - » Toshiba: **F12**
  - » Wyse: **P**



### TIP

- Here are some common **access keys for BIOS**:
  - » Acer: **Delete / F2**
  - » ASUS desktop / laptop: **F2**
  - » Dell: **F2**
  - » HP: **F10**
  - » IGEL: **Esc > SCU**
  - » Intel Compute Stick: **F2**
  - » Toshiba: **F2**
  - » Wyse: **Delete**



### NOTE

- **Some Possible Boot Related Settings in BIOS**:
  - » Boot from USB
  - » Boot Mode
  - » Boot Option Filter
  - » Boot Order / Boot Option Priorities

## A.2 Supportability, Setup Notes, and Known Issues

### Supportability of Atrustr P2T USB

○ : Supported  
 X : Not Supported  
 N/A : Not Available

Model		Acer Veriton M490G	Acer Veriton M6610G	Acer Veriton M6630G	ASUS MD570	ASUS MD580	ASUS MD780	ASUS MD790	ASUS X200CA	DELL Latitude D430	DELL Optiplex 755N
Atrustr P2T	Use via Legacy Boot	○	○	○	○	○	○	○	○	○	○
	Use via UEFI Boot	N/A	○	○	○	○	○	○	○	N/A	N/A
	Setup Notes	②								②	②
	Known Issues		④					②	⑤		⑨ ⑩

Model		DELL Wyse 3030	DELL Wyse D10D	DELL Wyse D50D	DELL Wyse Z50D	DELL Wyse Z90Q7	DELL XPS M1330	HP EliteDesk 800G2	HP mt40	HP mt42	HP Pavilion G6-2020TX
Atrustr P2T	Use via Legacy Boot	○	N/A	N/A	N/A	○	○	○	○	○	○
	Use via UEFI Boot	N/A	○	○	○	○	N/A	○	N/A	○	N/A
	Setup Notes	②	③	③	③	①	②		②		②
	Known Issues	⑥	⑥ ⑧	⑥	⑥	③ ⑪					

# Supportability of Atrustr P2T USB

- : Supported
- ✗ : Not Supported
- N/A : Not Available

Atrustr P2T		Model	HP Pro 3300	HP ProDesk 400G2	HP t510	HP t520	HP t5740e	HP t730	HP t820	HP t620	IGEL UD3-M320C	IGEL UD5-H820C
P2T USB	Use via Legacy Boot		○	○	○	○	○	○	○	○	○	○
	Use via UEFI Boot		○	○	N/A	○	N/A	○	○	○	N/A	○
	Setup Notes				②		②				②	
	Known Issues				① ③		③				①	⑥ ⑦

Atrustr P2T		Model	IGEL UD5-H830C	Intel Compute Stick STCK1A8LFC	Toshiba Portege R700	Intel Compute Stick STCK1A8LFC	HP t510	HP t520	HP t5740e	HP t730	HP t820	HP t620	IGEL UD3-M320C	IGEL UD5-H820C
P2T USB	Use via Legacy Boot		○	N/A	○		○	○	○	○	○	○	○	○
	Use via UEFI Boot		○	○	N/A	○								
	Setup Notes			③	②									
	Known Issues		⑥											

# Setup Notes

No.	Setup Notes	Applicable Devices	Remark
①	<p>To <b>use P2T USB</b> on your device, please enable <b>Boot from USB</b> in BIOS <i>first</i>:</p> <ol style="list-style-type: none"> <li>1. Start or restart your device.</li> <li>2. During the boot-up period, press <b>Delete</b> to enter BIOS (When prompted, press <b>Fireport</b> as the password).</li> <li>3. Select <b>Advanced</b> &gt; <b>Boot from USB</b> &gt; <b>Enabled</b>.</li> <li>4. Save changes and exit BIOS.</li> </ol>	DELL Wyse Z90Q7	
②	Some devices <i>ONLY</i> support <b>Legacy boot</b> .	Acer Veriton M490G DELL Latitude D430 DELL Optiplex 755N DELL Wyse 3030 DELL XPS M1330 HP t510 HP t5740e HP mt40 HP Pavilion G6-2020TX IGEL UD3-M320C Toshiba Portege R700	
③	Some devices <i>ONLY</i> support <b>UEFI boot</b> .	DELL Wyse D10D DELL Wyse D50D DELL Wyse Z50D Intel Compute Stick STCK1A8LFC	

# Known Issues

No.	Known Issues	Applicable Devices	Remark
①	Changing certain display types by hot-plug is not supported: from DVI-I to VGA, and vice versa.	HP t510 IGEL UD3-M320C	
②	Only one of the LAN ports can be detected by Atrust OS. <b>NOTE:</b> The one in a higher position of the rear panel cannot be detected.	ASUS MD790	
③	<b>Suspend mode</b> is not well-supported by some devices and is removed from available options while powering off devices.	DELL Wyse Z90Q7 HP t510 HP t5740e	
④	The screen remains blank when waking a device through the network. <b>Workaround:</b> Power off that device, and then on.	Acer M6610G	
⑤	The device cannot be waked up through the network. <b>Workaround:</b> Power on that device manually.	ASUS X200CA	
⑥	The <b>best resolution</b> might not be detected automatically while the originally supplied DVI-to-VGA adapter is not used. <b>Solutions:</b> <ul style="list-style-type: none"> <li>• Use the originally supplied DVI-to-VGA;</li> <li>• If not available, you can disable Auto-Detection and change the resolution manually on Atrust Client Setup.</li> </ul>	DELL Wyse 3030 DELL Wyse D10D DELL Wyse D50D DELL Wyse Z50D IGEL UD5-H820C IGEL UD5-H830C	
⑦	The USB-based headset cannot work with USB 3.0 port in RDP sessions.	IGEL UD5-H820C	
⑧	The DisplayPort-based monitor needs to be attached first before the system is powered on. Otherwise, the screen might be blank.	DELL Wyse D10D	
⑨	USB boot has been set as first priority in BIOS, but users cannot boot from P2T USB directly; users always have to enter BIOS <b>first</b> , and then exit to boot from P2T USB. <b>Solution:</b> Update BIOS to version A22.	DELL Optiplex 755N	
⑩	The volume of audio input is too small and cannot be solved by adjusting the input sensitivity manually.	DELL Optiplex 755N	
⑪	When a <b>DVI display</b> is connected to <b>DisplayPort</b> and is set as <b>the extended display</b> , this display might not show correct contents if <b>the primary display</b> is disconnected; the taskbar might disappear (when the primary display is disconnected, this display should switch from the extended to the primary, and the taskbar should be accessible on the primary display). <b>Workaround:</b> Replug the DisplayPort-to-DVI adapter.	DELL Wyse Z90Q7	





**Atrust**