

Atrust P2T Thin Client

Learning the Basics

Atrust

Version 2.03

© 2017 Atrust Computer Corp.

Copyright and Trademark Statements

© 2017 Atrust Computer Corp. All rights reserved.

This document contains proprietary information that is protected by copyright. No part of this document may be photocopied, reproduced, or translated to another language without the prior written consent of Atrust Computer Corp.

Disclaimer

Atrust Computer Corp. ("Atrust") makes no representations or warranties with respect to the contents or use of this document, and specifically disclaims any express or implied warranties of merchantability or fitness for any particular purpose. Atrust is not liable for technical or editorial errors or omissions contained herein. The information in this document is subject to change without notice.

Trademark Statements

Atrust is a trademark of Atrust Computer Corp.

Microsoft, Windows, Windows Server, RemoteFX, and MultiPoint are trademarks or registered trademarks of the Microsoft group of companies.

Citrix, ICA, XenApp, XenDesktop, and VDI-in-a-Box are trademarks of Citrix Systems, Inc. and/or one or more of its subsidiaries, and may be registered in the United States Patent and Trademark Office and in other countries.

VMware, VMware View, and VMware Horizon View are trademarks or registered trademarks of the VMware, Inc.

PCoIP is a registered trademark of Teradici Corporation in the United States and/or other countries.

The Parallels and 2X are registered trademarks of Parallels International GmbH.

Other product names mentioned herein are used for identification purposes only and may be trademarks and/or registered trademarks of their respective companies.

About This Quick Guide

This guide provides basic instructions on how to use your P2T thin client.

Notes, Tips, and Warnings

Throughout this manual, the notes, tips, and warnings in the following formats are used to provide important information, useful advice, and prevent injuries to you, damage to your devices, or loss of data on your system.



NOTE

- A note provides important information for a specific situation.



TIP

- A tip gives a piece of useful advice to perform a task more efficiently.



WARNING

- A warning provides crucial information that must be followed to prevent injuries to you, damage to your devices, or loss of data on your system.

Learning the Basics

The following topics will guide you through the basics of using your P2T thin client:

Topic 1: Quick Connection Screen

Topic 2: Configuring the Time Zone

Topic 3: Returning to the Quick Connection Screen (if needed)

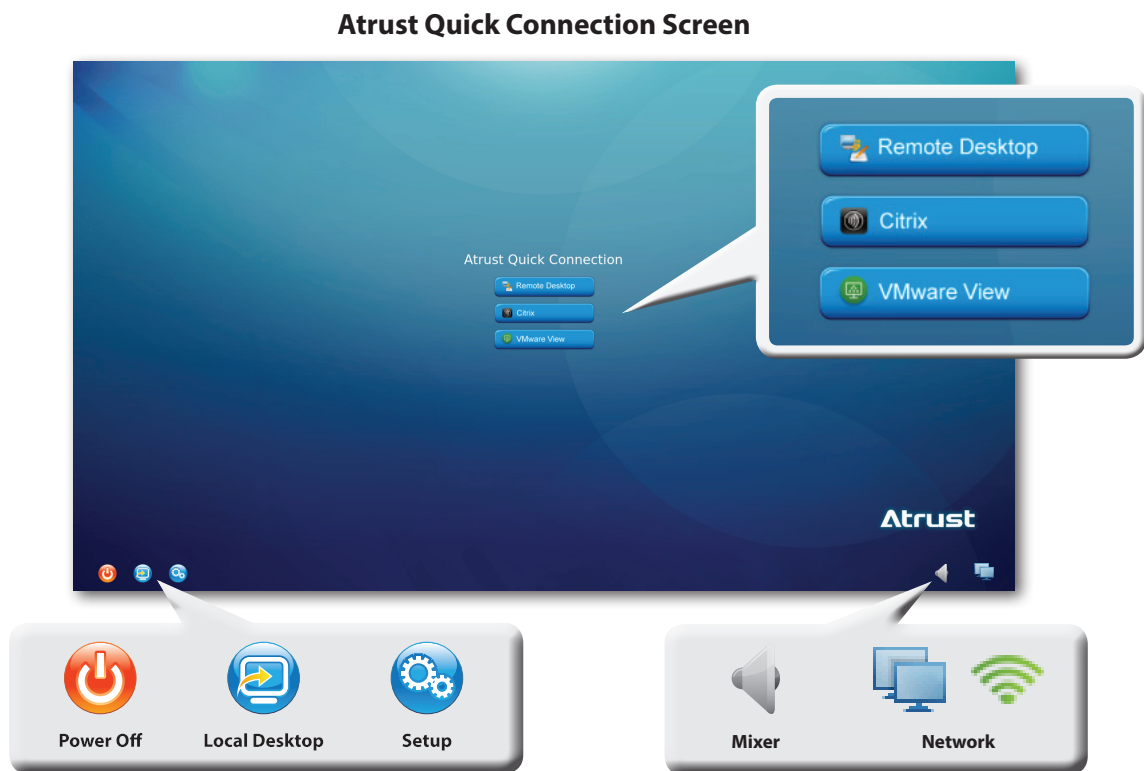
Topic 4: Accessing Desktops or Applications

- Microsoft Remote Desktop Services (RDP sessions)
- Citrix Services (ICA sessions)
- VMware View or Horizon View Services (View sessions)
- Parallels RAS or Remote Desktop Services (2X sessions)

Topic 1: Quick Connection Screen

To start using your P2T thin client, please do the following:


1. (a) Go to **Topic 2** to set the time zone for the *first time* use.
(b) Go to **Topic 4** if the time zone had been set.




Power Off	Click the icon to suspend, shut down, or restart the system.
Local Desktop	Click the icon to enter the local Linux desktop. To return to this screen from the local Linux desktop, see Topic 3 .
Setup	Click the icon to launch Atrust Client Setup.
Mixer	Click the icon to configure audio settings.
Network	Indicates the network type (wired or wireless) and status. Click the icon to configure network settings.

Topic 2: Configuring the Time Zone

To set the time zone for your P2T thin client, please do the following:

1. Click the **Setup**  icon to launch Atrust Client Setup.

Atrust Client Setup



Navigation Area
Click to select a setting item or entry.

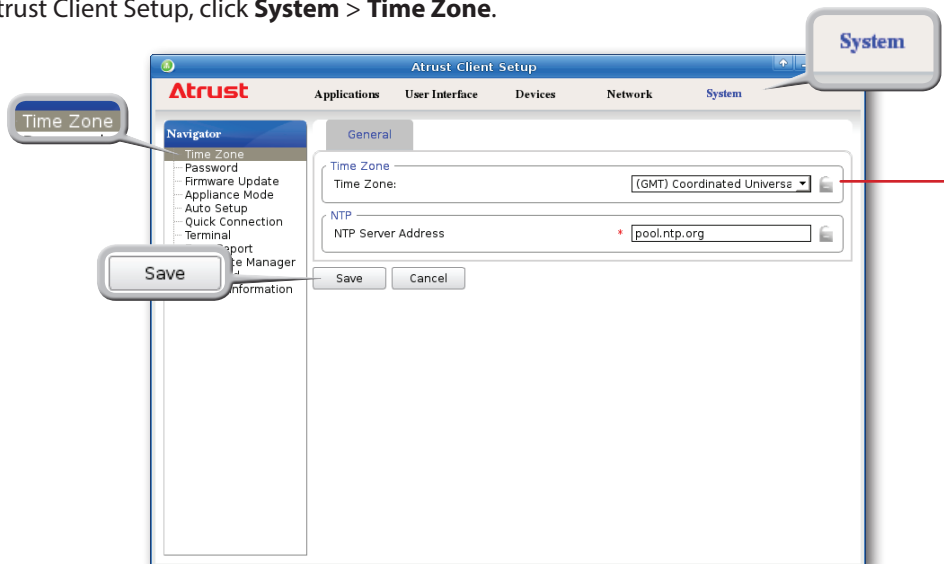
Category Tabs
Click a tab to select a setting category.



NOTE

- For details on how to configure client settings and customize your P2T thin client with Atrust Client Setup, please refer to the User's Manual for P2T Thin Client.

2. On Atrust Client Setup, click **System** > **Time Zone**.



Time Zone

System

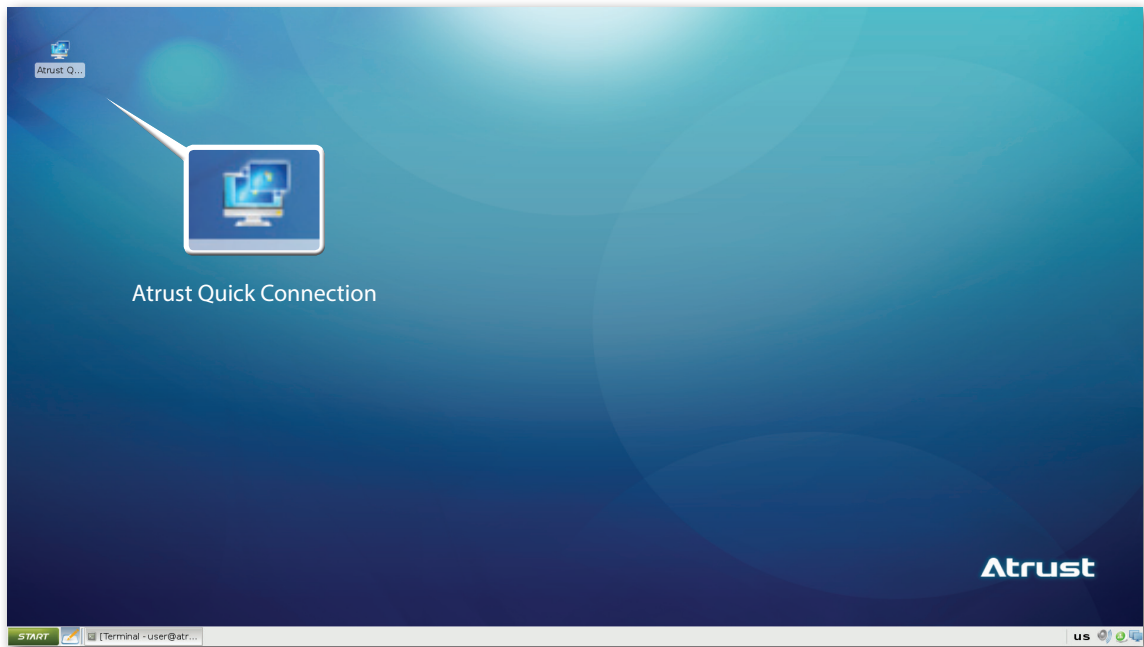
Time Zone drop-down menu

3. Click the Time Zone drop-down menu to select the desired time zone.
4. Click **Save** to apply, and then close Atrust Client Setup.

Topic 3: Returning to the Quick Connection Screen

To return to *Atrust Quick Connection screen* when on local Linux desktop, please double click **Atrust Quick Connection** on that desktop.

Local Linux Desktop




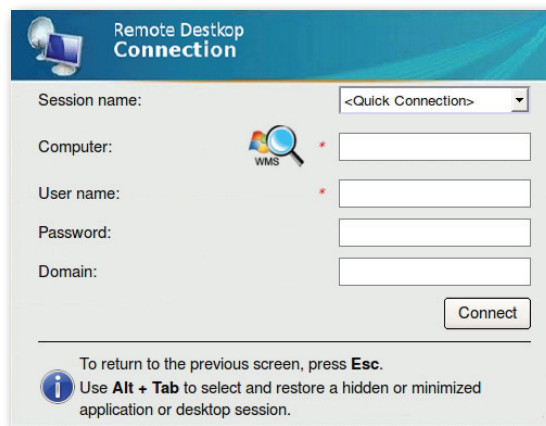
Topic 4: Accessing Desktops or Applications

Through Atrust Quick Connection screen, you can access three types of desktop virtualization services: **Remote Desktop**, **Citrix**, and **VMware View**. For **Parallels RAS / Remote Desktop**, you can access services by customized connection shortcuts.

Accessing Microsoft Remote Desktop Services


To access Microsoft Remote Desktop services, please do the following:

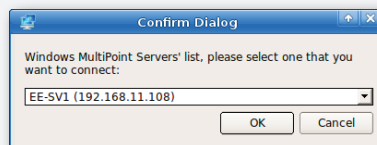
1. Click  **Remote Desktop** on Atrust Quick Connection screen.
2. On the appeared window, type in the computer name or IP address of the server, user name, password, and domain (if any), and then click **Connect**.




NOTE

- To discover available Windows MultiPoint Server systems over your network, please do the following:

1. Click  on the left of the Computer field.
2. Upon completion, a window appears with the search result.




3. Click the drop-down menu to select the desired system, and then click **OK**.
 4. The IP address of the selected system will appear in the Computer field.
- To return to *Atrust Quick Connection screen*, press **Esc**.

3. The remote desktop will be displayed on the screen.

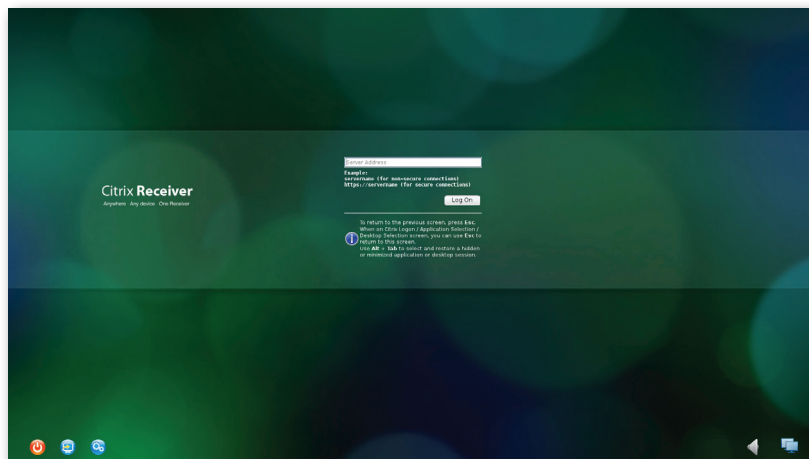
Accessing Citrix Services

Connecting to the Server

To connect to the server through which Citrix services are accessible, please do the following:

1. Click  **Citrix** on Atrust Quick Connection screen.
2. On the appeared **Atrust Citrix Connection screen**, enter the appropriate IP address / URL / FQDN of the server, and then click **Log On**.

Atrust Citrix Connection Screen



NOTE

- FQDN is the acronym of Fully Qualified Domain Name.
- To return to **Atrust Quick Connection screen**, press **Esc**.

Logging On to Citrix Services

When connected to the server, the **Citrix Logon screen** appears. The appeared screen and required credentials for Citrix services may vary with the service type and version.



NOTE

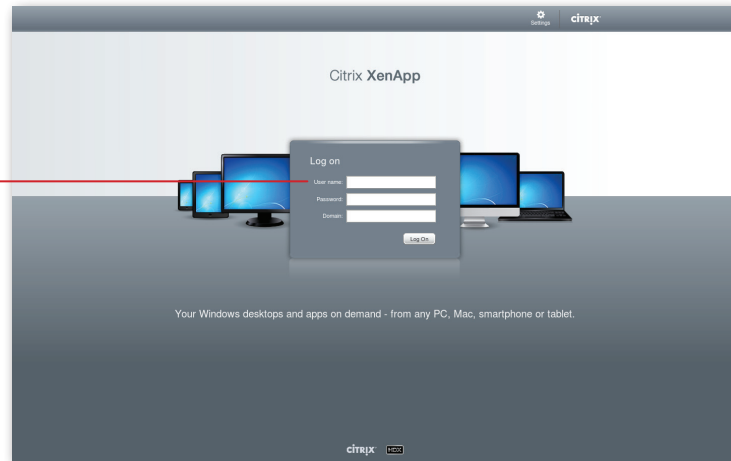
- A warning message "This Connection is Untrusted" might appear. Consult the IT administrator for details and ensure the connection is secure **first**.
- To **import** a security certificate, please refer to the *User's Manual for P2T Thin Client*.
- To **bypass**, click **I Understand the Risks** > **Add Exception** > **Confirm Security Exception**.

The following are two examples of Citrix Logon screens.

XenApp 6.5 Platinum:

Citrix Logon Screen

Type the required user name, password, domain, and then click **Log On** to access virtual applications.



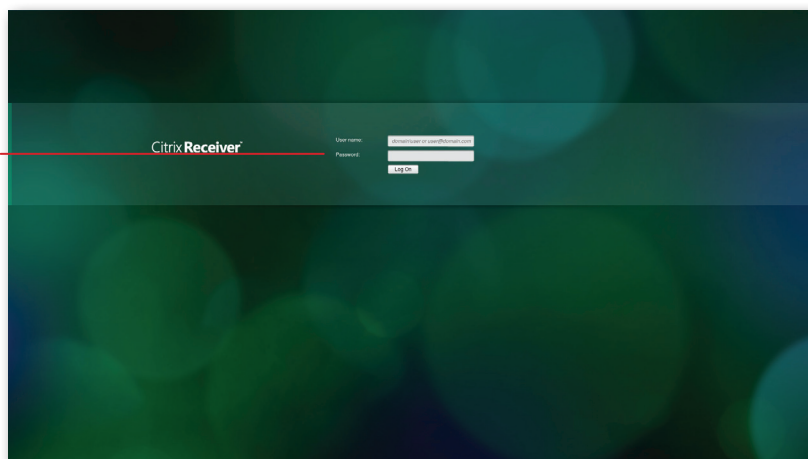
NOTE

- To return to Atrust Quick Connection screen, press **Esc**.
- If your XenApp server doesn't belong to any domain, type the computer name of the server in the Domain field.

XenApp and XenDesktop 7.5 Platinum:

Citrix Logon Screen

Type the required user name, password, and then click **Log On** to access virtual desktops or applications.



NOTE

- To return to Atrust Quick Connection screen, press **Esc**.

Accessing Virtual Desktops and Applications

You will enter the **Desktop Selection** or **Application Selection screen** after logon. On the screen you can click to select the desired desktop or application(s).




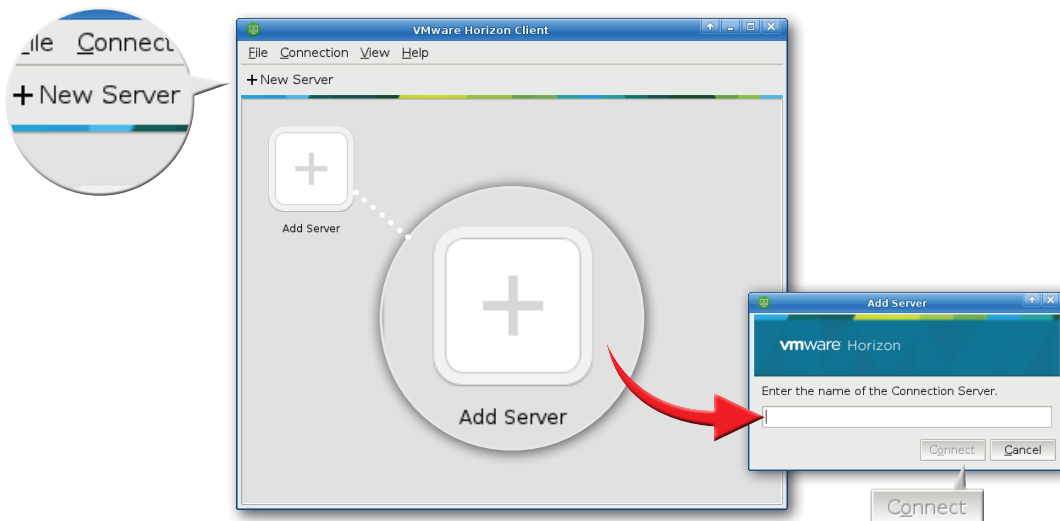
NOTE

- Clicking on Application Selection screen will bring the screen to the front and leave all launched application windows hidden behind. Use **Alt + Tab** to select and restore a hidden or minimized application window.
- Exiting a virtual desktop or application will return to the **Desktop Selection** or **Application Selection screen**. On the screen, you can:
 - ✧ Click to launch another virtual desktop if any or to launch other applications.
 - ✧ Click **Log Off** on the top of the screen to return to the **Citrix Logon screen**.
 - ✧ Press **Esc** to return to **Atrust Quick Connection screen** directly.

Accessing VMware View or Horizon View Services

To access VMware View or Horizon View services, please do the following:

1. Click  on Atrust Quick Connection screen.
2. On the opened window, double-click **Add Server** icon or click **New Server** in the top-left corner. A window appears prompting for the name or IP address of the VMware View Connection Server.
3. Enter the required information, and then click **Connect**.

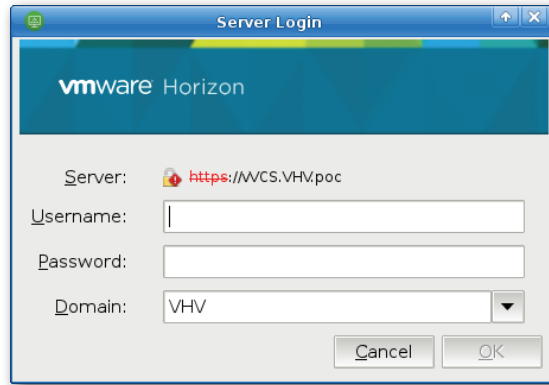


NOTE

- To return to **Atrust Quick Connection screen**, close the opened window.

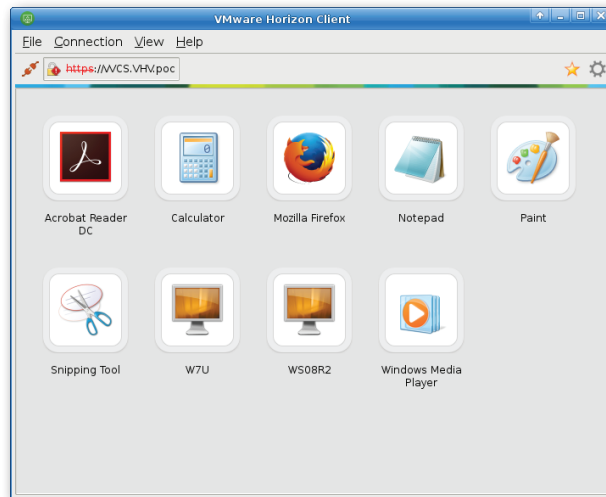
4. A Welcome window might appear, click **OK** to continue.

5. A window appears prompting for the credentials. Enter your user name, password, click the Domain drop-down menu to select the domain, and then click **OK**.

**NOTE**

- A window might appear with a certificate message about the remote server. Consult the IT administrator for details and ensure the connection is secure **first**.
- To **import** a security certificate, please refer to the *User's Manual for P2T Thin Client*.
- To **bypass**, click **Connect Insecurely**.


6. The Desktop and Application list appears with available desktops and/or applications for the provided credentials. Double click to select the desired desktop or application.

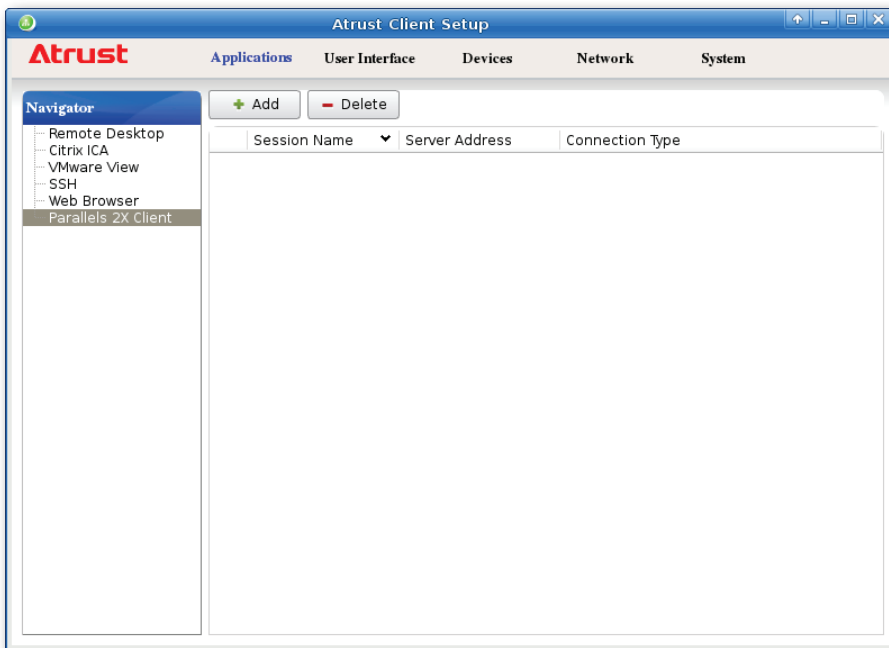


7. The virtual desktop or application will be displayed on the screen.

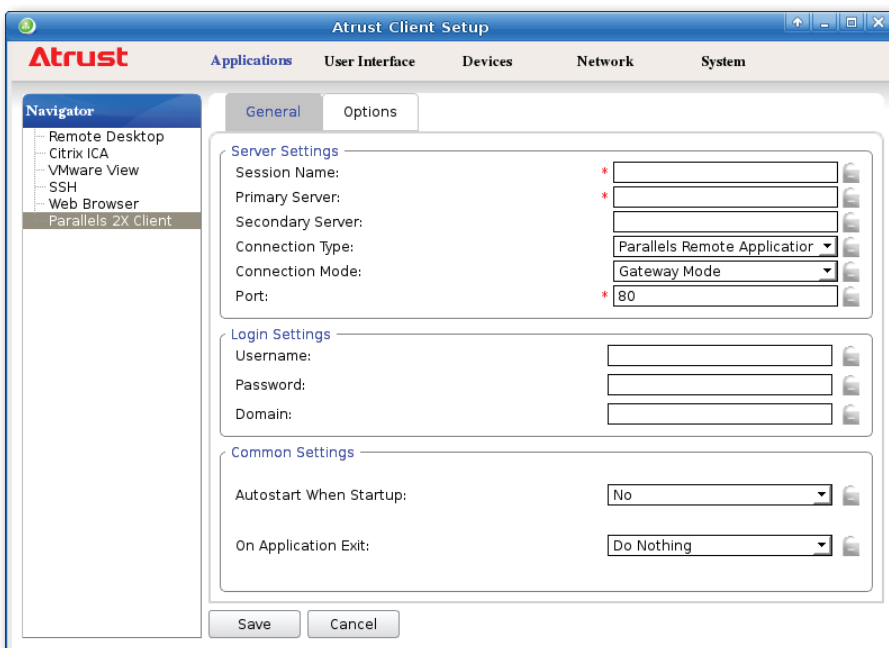
Accessing Parallels RAS or Remote Desktop Services

To access Parallels RAS / Remote Desktop services, please do the following:

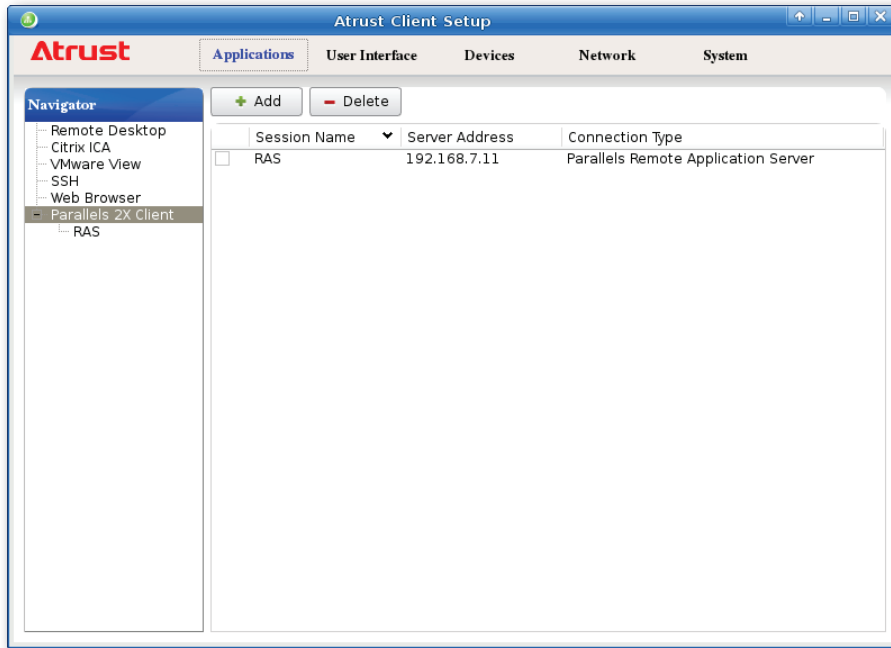
1. On Atrust Quick Connection screen, click  to enter the local Linux desktop.
2. Click **START > Settings > Atrust Client Setup**.
3. On Atrust Client Setup, click **Applications > Parallels 2X Client**.
4. Click **Add** on the top to create a new entry of connection settings.



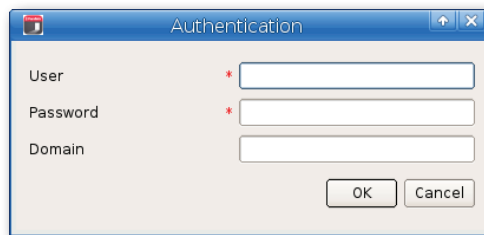
5. On **General** sub-tab, select **Parallels Remote Application Server** or **Standard RDP** for the connection type, enter the session name and the primary server address, and then click **Save** to confirm.



- The new entry is added to the RAS / RDP connection list and the shortcut is automatically created on the local desktop and START menu.



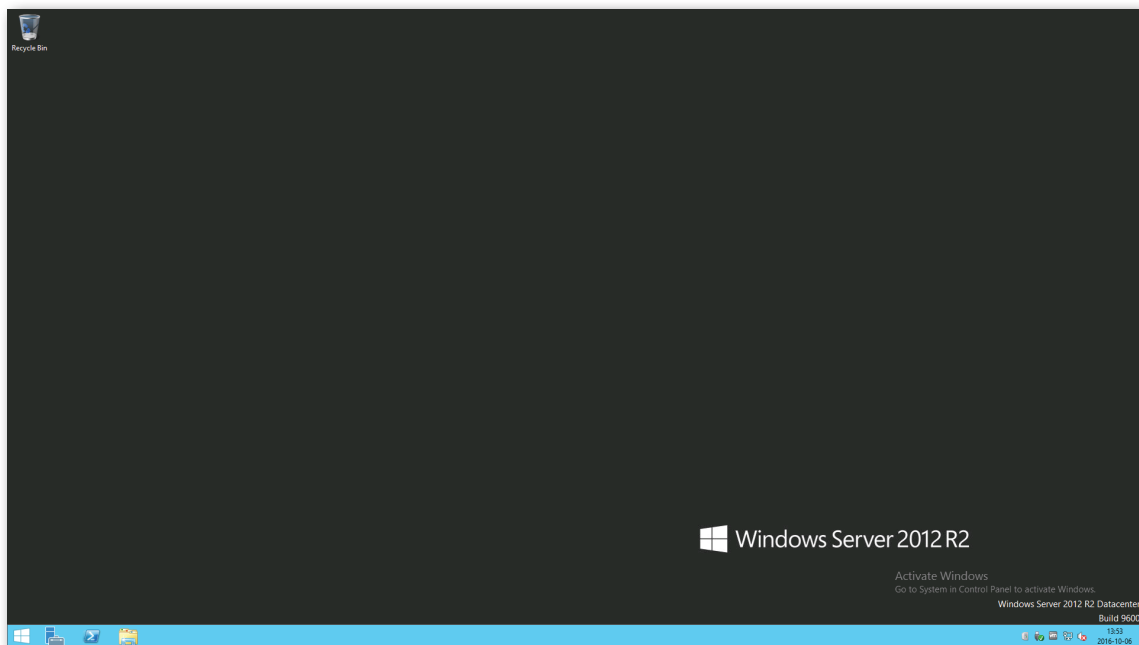
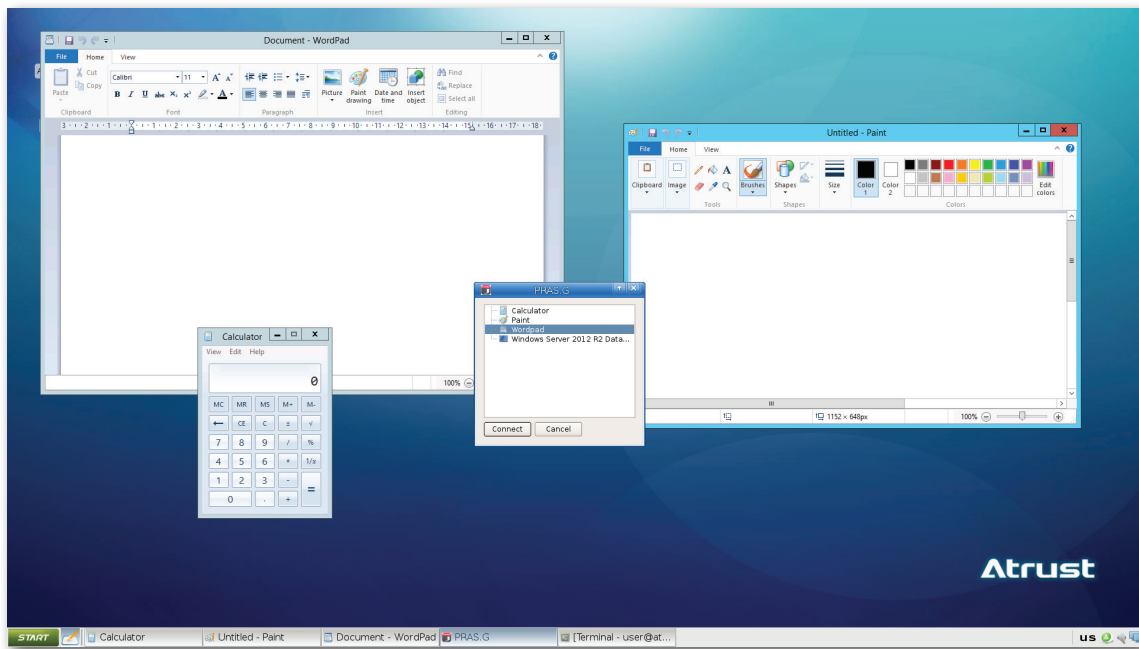
- Double click the shortcut on the local desktop or START menu.
- On the opened window, provide your credentials as required, and then click **OK**.



- For RAS connection, a window appears with available applications and desktops. Click the desired application or desktop, and then click **Connect** to confirm.
For RDP connection, you will log in to the remote desktop directly.



10. The application or desktop will be displayed on the screen.



NOTE

- The desktop will be displayed in full screen.

Atrust